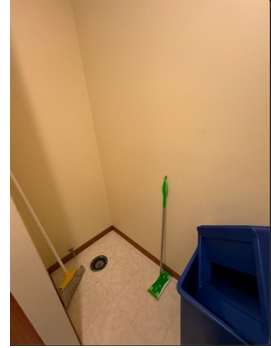


Home & Business/Office Building-Zoned Commercial & Residential



\$ 400,000



112 E 10th St, Eudora, KS 66025

- » MLS #: 11446723
- » Commercial | 3,200 ft² | Lot: 10,019 ft²
- » Fantastic Investment Opportunity for Home Business, Daycare, AirBNB, Office Building
- » Live in Half and Rent Out Other Half, 6 offices or 6 Bedrooms, 2 Bath Areas, Walkout Basement
- » Off Street Parking for at least 10, Office Furniture Can Be Left For New Owner
- » More Info: 112E10Eudora.IsForSale.com



Rob Lang
At Home Kansas
(785) 393-2274 (Cell)
rob@askroblang.com
<http://www.YouWantHouses.com>



At Home Kansas
24914 W 76th St
Shawnee, KS 66227
(785) 393-2274

